

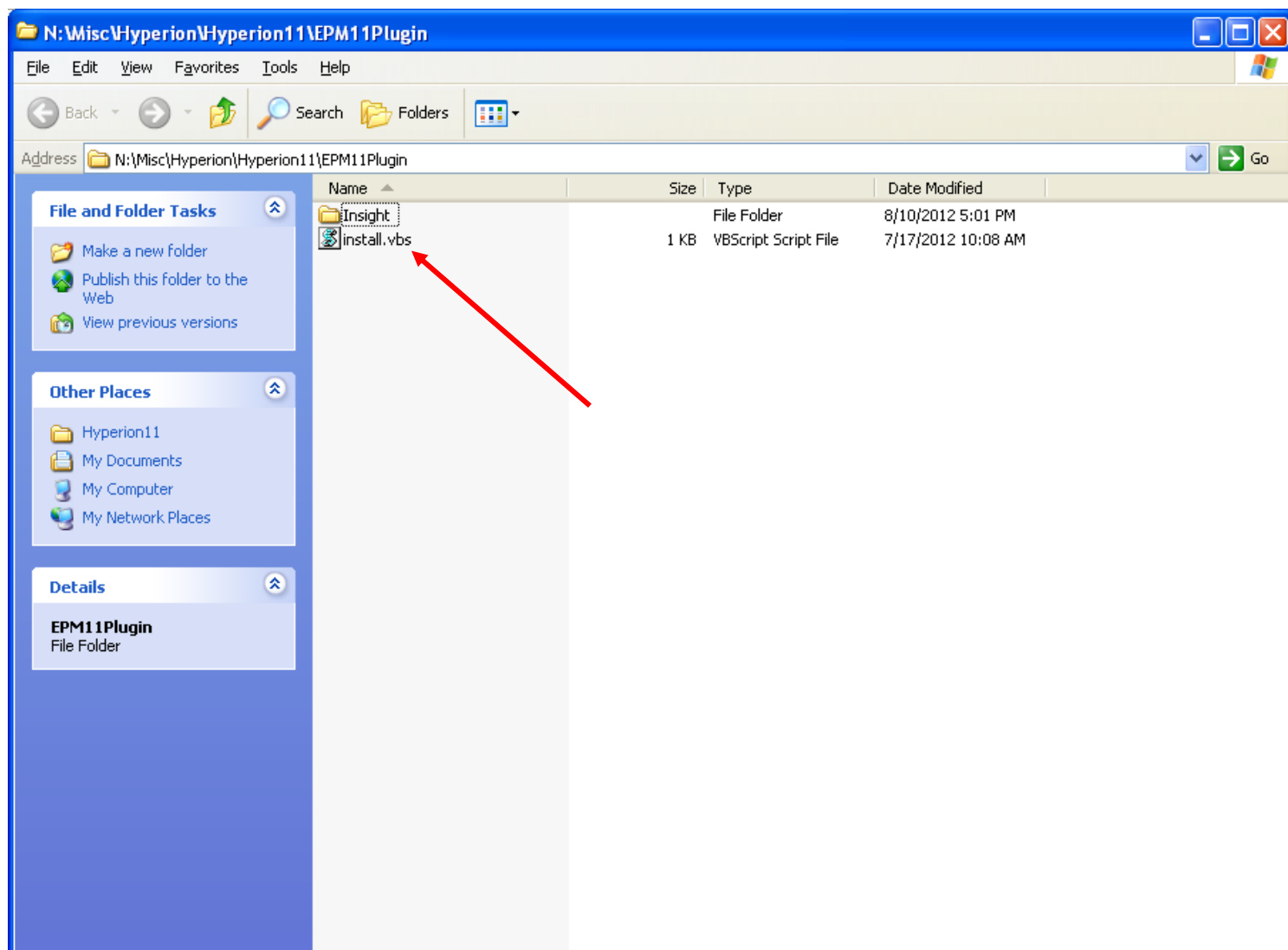
How to Install Hyperion EPM11

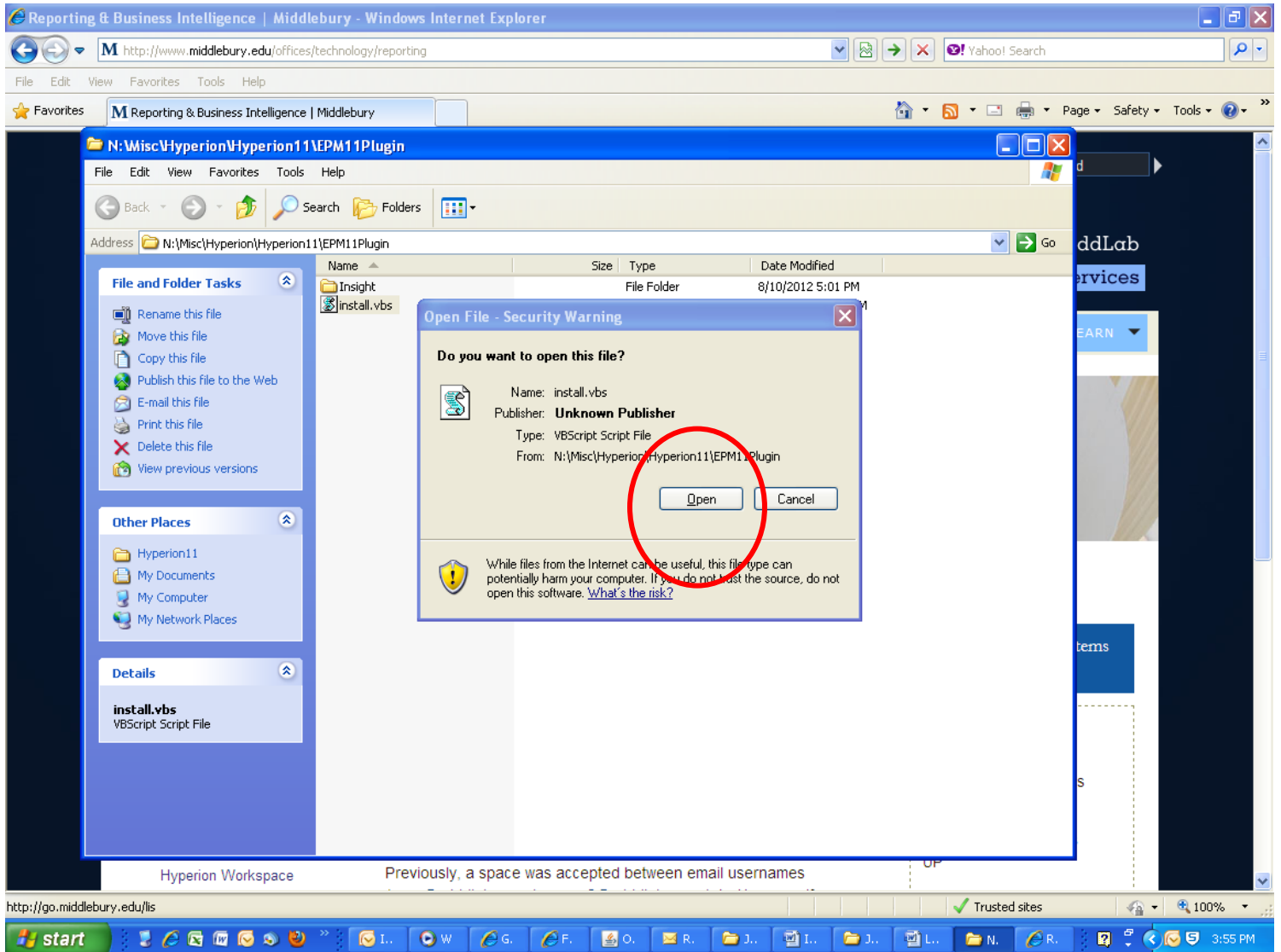
You will need to download the Hyperion EPM11 plugin onto your computer. It's a one-time process, specific to the user on that computer. Currently, Hyperion does not work on Mac computers.

Use Internet Explorer for Hyperion....and go to this link for the download:

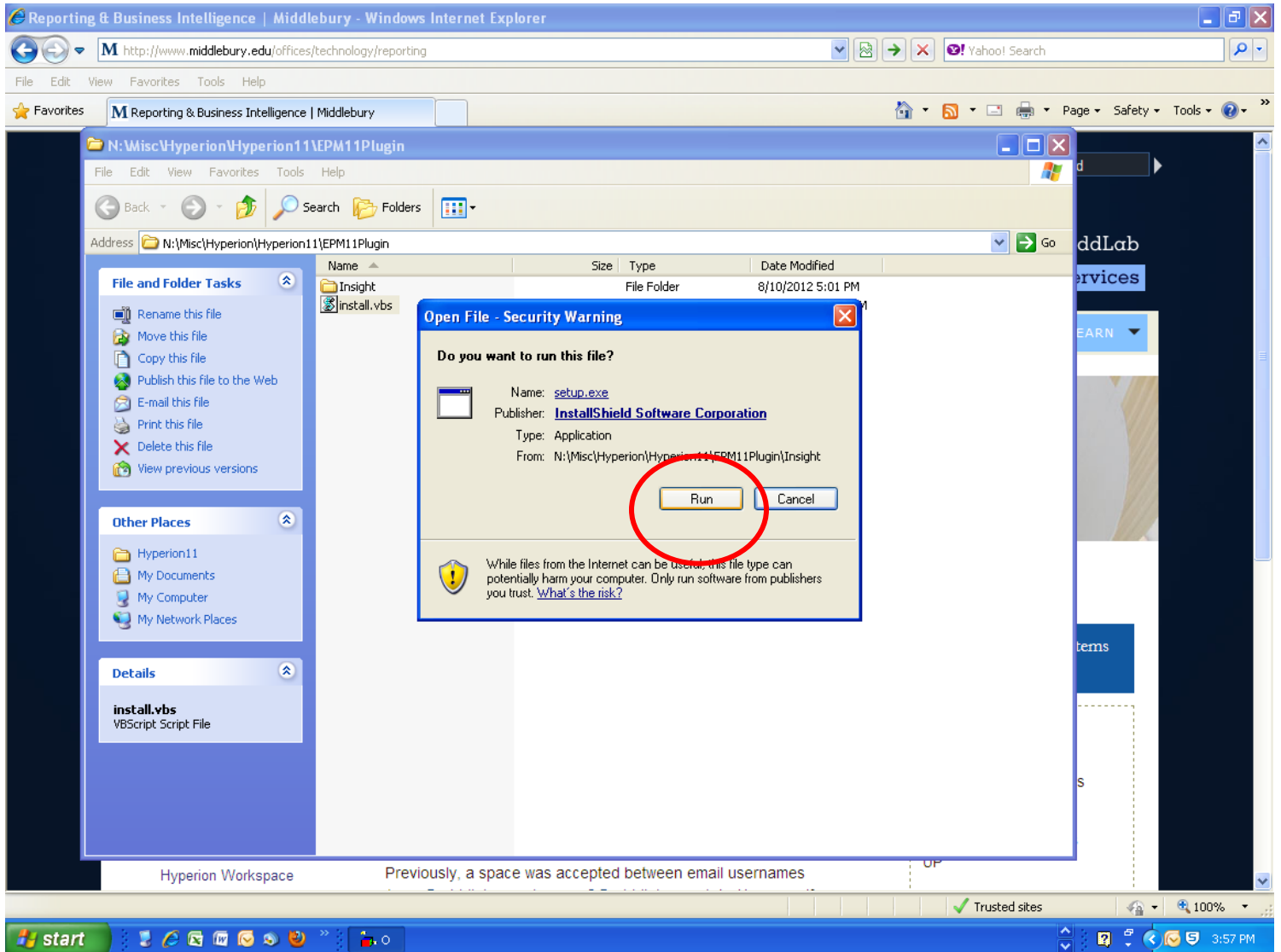
[N:\misc\Hyperion\Hyperion11\EPM11Plugin\](#)

Double-click on the file "install." It will take only a minute or two.

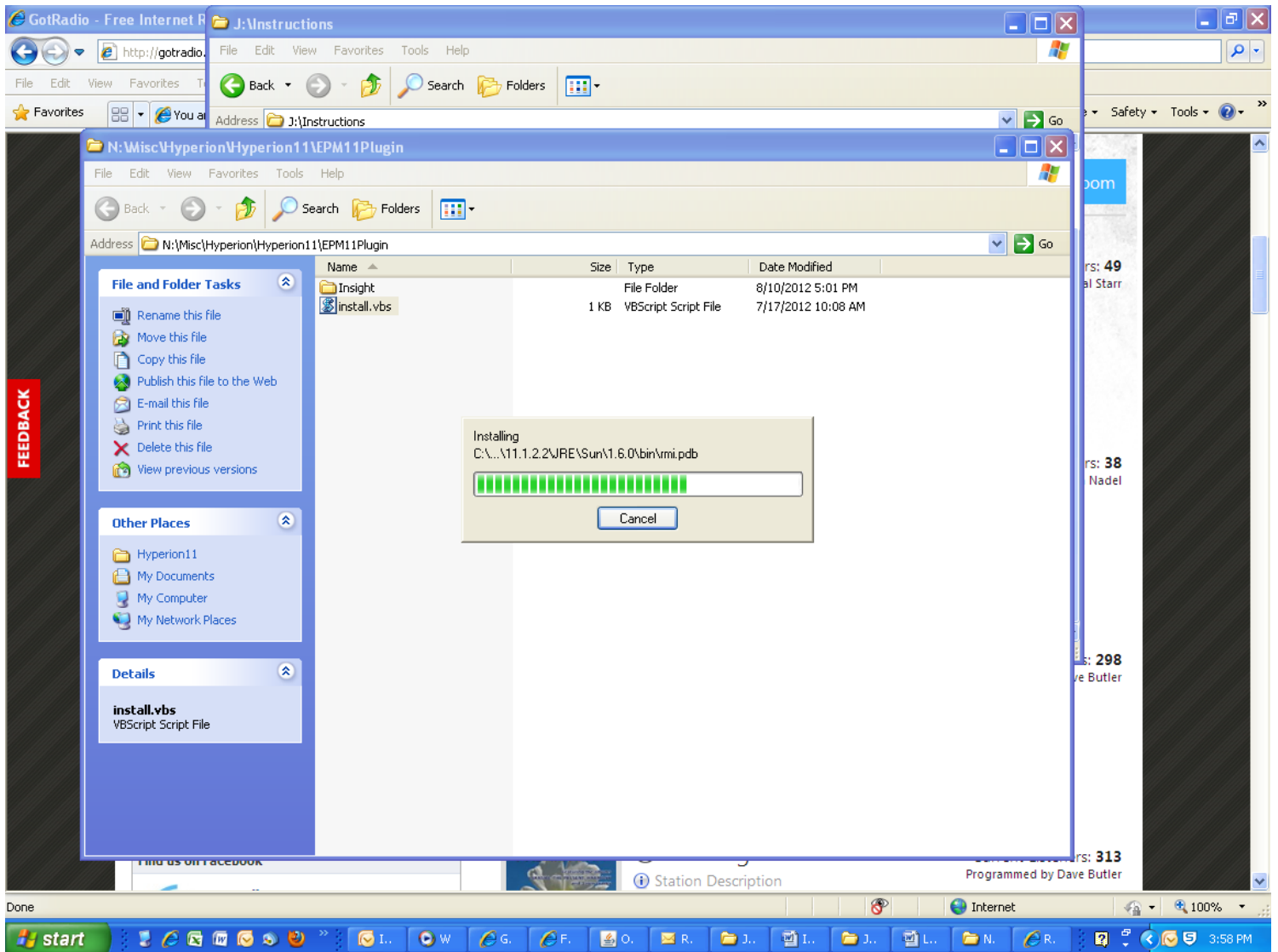




Click on **Open**.



Click on **Run**.



The Install Wizard windows will appear and the program will be downloaded.

Then type [go/hyperion](#) in the URL field to get to the LIS page where there is a link to the Hyperion Workspace:

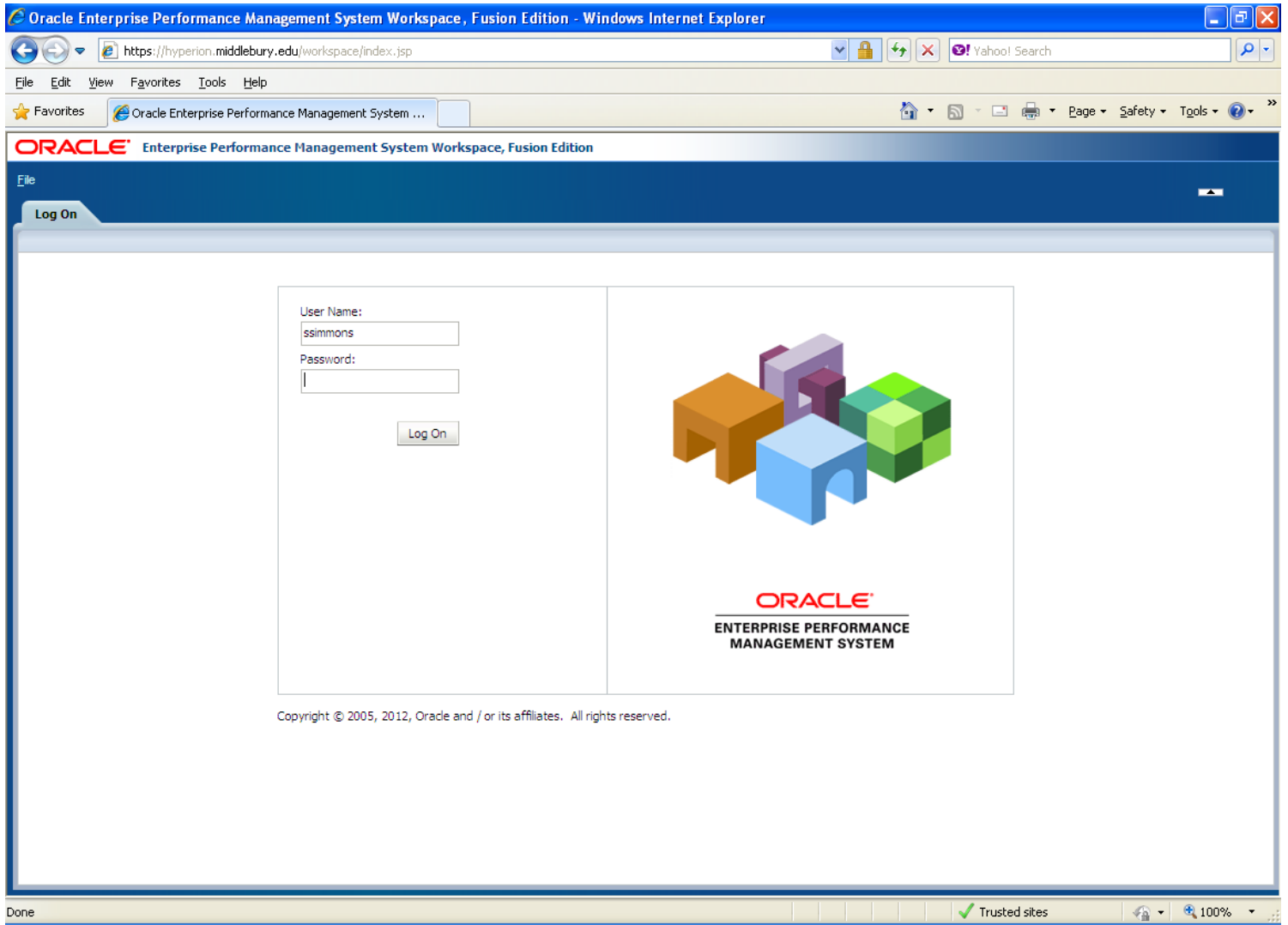
The screenshot shows a Windows Internet Explorer browser window displaying the Middlebury Library & Information Services website. The address bar shows the URL <http://www.middlebury.edu/offices/technology/reporting>. The page has a blue header with the text "Library & Information Services" over a background image of a library interior. Below the header is a navigation breadcrumb: "Home » Offices & Services » Technology » Reporting & Business Intelligence".

The main content area is divided into two columns. The left column contains a navigation menu with links such as "Banner", "Curricular Technology", "Help & Support", "Information Security", "Library & Information Services", "Reporting & Business Intelligence", "Telephone Services", "Web Application Development", and "WebMail". The right column contains the main content, which includes a section titled "Latest News, Tips and Tricks" with a sub-section "Email Invalid Characters" dated "Thu, 01/07/2010 - 11:55am". Below this is a "Cycle Name Invalid Characters" section.

On the right side of the page, there is a "Reporting & BI Systems Status" section. It contains a "Systems Status" box with the following information: "Hyperion WorkSpace is UP", "Reporting Database is UP", and "Advisor is UP". Below this is a "Hyperion" section with a link to "Hyperion WorkSpace". This link is circled in red.

The browser's status bar at the bottom shows "Trusted sites" and a zoom level of "100%".

Just click on the [Hyperion Workspace](#) link.



Login with your Novell username and password and press the **Log On** button.

From this point, refer to instructions “Dashboard Budget Queries Instructions” for getting to and running the published budget dashboard reports.