

Troubleshooting midd_secure

Leopard, Tiger and earlier

Not compatible with older wireless
cards

midd_secure may be compatible with some
older Airport cards (old iBooks, PowerBooks)

Not available everywhere

- Weak signals can cause errors
- Only available in “academic” areas/buildings and some public spaces in dorms
- If location is not listed at <http://go/wireless> we cannot guarantee coverage

Defaults should work



- **(1 exception) uncheck "Remember this network"**
- Enter username/password every time you reconnect

Accept the Certificate



- Need to accept certificate at every reconnect

That should be all!

It may take a few seconds for the IP address to be obtained, but it should work.

But it doesn't always work...

The culprits

- Cached certificates in keychain
- Old password stored in keychain
- Old configuration for midd_secure in Internet Connect
- Possible leopard bug – does not save the settings correctly when “Remember this network” is checked

Clearing cached certificates and passwords

- Open keychain access (Applications => Utilities)

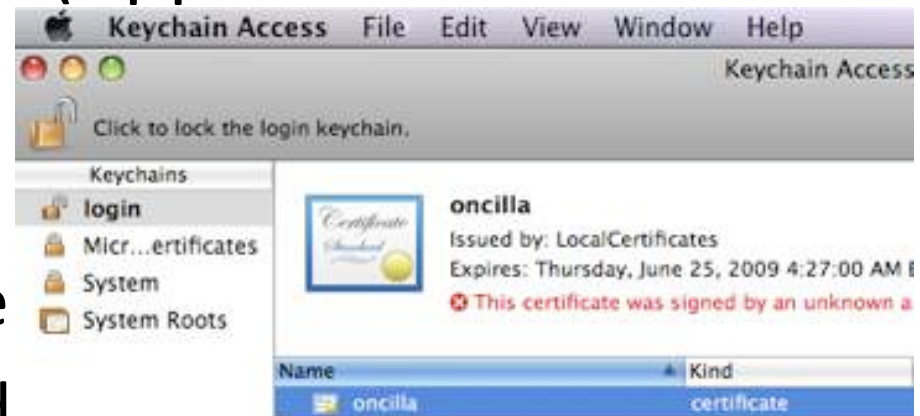
- Delete:

- The oncilla certificate

- The cached password

- (may appear as: WPA:midd_secure or WEP:midd_secure or midd_secure)

- Close Keychain Access



Check “Internet Connect” – Tiger and earlier

- Internet Connect
 - only present in Mac OS X Tiger (10.4) and earlier
 - Resides in Macintosh HD => Applications.
- Open Internet Connect and click “802.1X”
- Drop-down midd_secure and click “Edit”
- Delete midd_secure entries and close Internet Connect

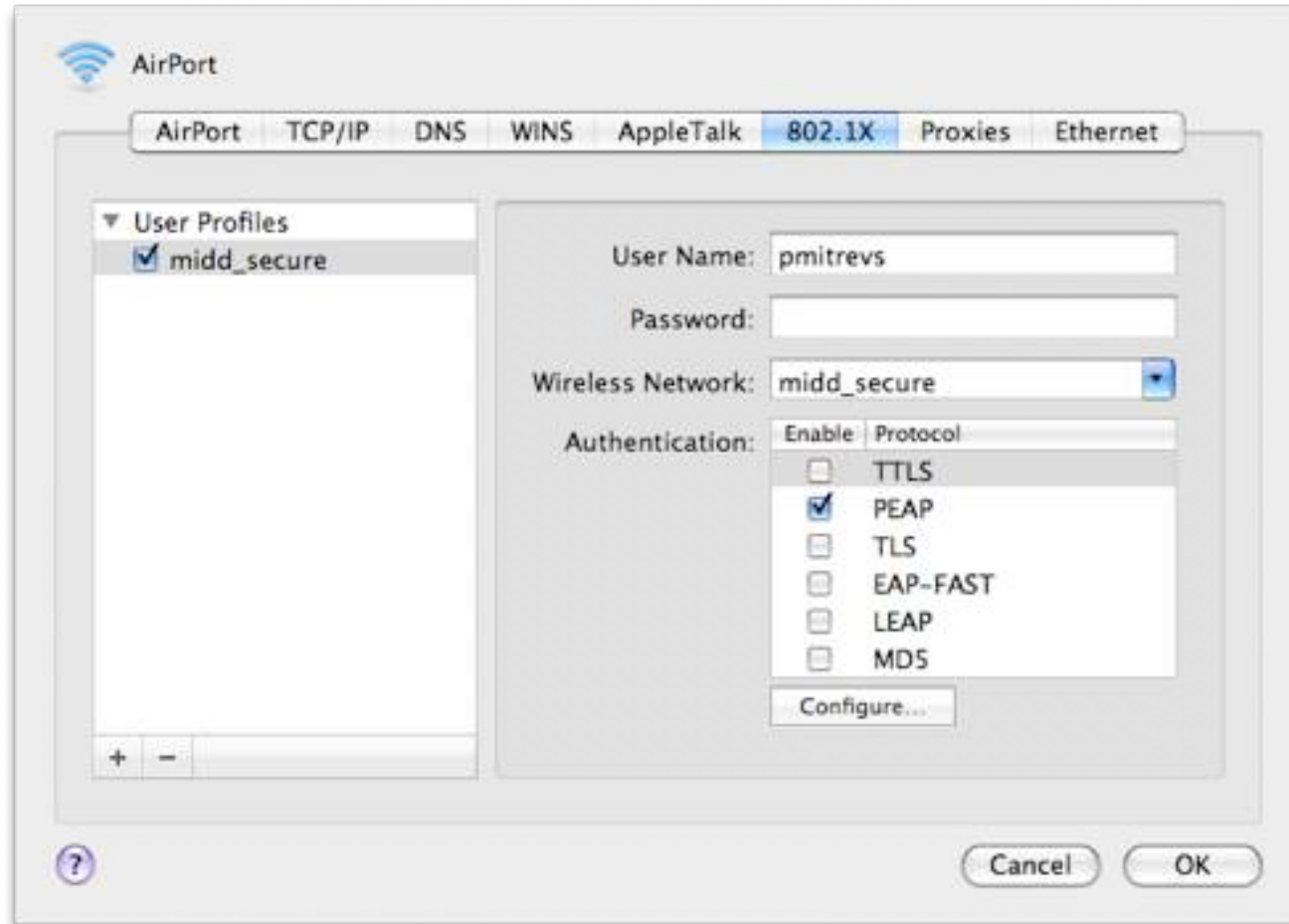
Check System Preferences

- Open System Preferences => Network
 - 10.4 and earlier: Select “Airport” and click “Configure”
 - 10.5: Select “Airport” and click “Advanced”
- Airport tab: Delete “midd_secure” from list
- 802.1X tab (10.5 only): delete any and all “midd_secure” entries
- OK => Apply

Add a manual 802.1X profile – 10.5

- Open System Preferences => Network => Airport => Advanced => 802.1X
- Click “+” => “Add User Profile”
- See next slide for screenshot
- Do NOT enter a password
- Only PEAP should be **checked**
- **OK => Apply**

Proper 802.1X profile – 10.5



Add a manual 802.1X profile – Tiger and earlier

- Open Internet Connect => File => New 802.1X
- Drop-down “Other”, select “Edit”
- See next slide for screenshot
- Do NOT enter a password
- Only PEAP should be **checked**
- OK => Close Internet Connect, save if prompted!

Proper 802.1X profile – 10.4 and earlier

